

# St. Elizabeth **PHYSICIAN & PROVIDER DIRECTORY**



# Table of Contents

## PRIMARY CARE

Alexandria Primary Care	4
Aurora Primary Care	5
Bellevue Primary Care	6
Burlington Primary Care	7
Butler Primary Care	8
Cold Spring Primary Care	9
Covington Internal Medicine	10
Covington Primary Care	11
Crestview Hills Internal Medicine	12
Crestview Hills Internal Medicine & Pediatrics	13
Crestview Hills Pediatrics	14
Crittenden Primary Care	15
Dry Ridge Primary Care	16
Edgewood Primary Care	17
Florence Pediatrics	18
Florence Ewing Primary Care	19
Florence Turfway Primary Care	20
Fort Mitchell Primary Care	21
Greendale Primary Care	22
Hebron Conner Primary Care	23
Hebron Litton Primary Care	24
Independence Primary Care	25
Newport/Ft. Thomas Primary Care	26
Southgate Internal Medicine	27
Taylor Mill Primary Care	28
Union Mt. Zion Primary Care	29
Union US 42 Primary Care	30
Walton Primary Care	31
Williamstown Primary Care	32
Business Health	34
Business Health Employer Based Clinics	35
Concierge Complete	36
Geriatrics	37
Hospitalists	38



# SPECIALTY CARE

Addiction Medicine	44
Behavioral Health	46
Cardiac Surgery	50
Cardiology	52
Dermatology	56
Diabetic Care & Endocrinology	58
Electrophysiology	60
Gastroenterology & Endoscopy	62
General Surgery	64
Gynecologic Oncology	68
Heart Failure	70
Infectious Disease	71
Neurology	72
Obstetrics & Gynecology	74
Oncology & Hematology	76
Ophthalmology	78
Osteopathic Manipulation Medicine	79
Palliative Care	80
Physiatry	81
Podiatry	82
Pulmonology	84
Radiation Oncology	86
Reconstructive Surgery	87
Rehabilitation Services	88
Rheumatology & Infusion	90
Sleep Medicine	91
Spine & Pain Management	92
Sports Medicine	93
Thoracic Surgery	94
Urogynecology	96
Urology	97
Vascular Surgery	98
Weight Management	100
Wound Care	102

# URGENT CARE

	104
--	-----

# ALEXANDRIA

## Primary Care

300 Commercial Circle  
Alexandria, KY 41001

(859) 635-9440



**Ashley Minton, MD**  
Family Medicine



**Michelle Murray, MD**  
Family Medicine



**Stephen Scott, MD**  
Family Medicine



**Thomas Sharp, DO**  
Family Medicine



**Emily Duncan, APRN**  
Family Medicine

# AURORA

## Primary Care

204 Bridgeway Street  
Aurora, IN 47001

(812) 926-3133



**Aleah Gibson, MD**  
Family Medicine



**Kimberly Myers, APRN**  
Family Medicine

# BELLEVUE

## Primary Care

119 Fairfield Avenue, Suite R 102  
Bellevue, KY 41073

(859) 431-0090



**Jennifer Adams, MD**  
Family Medicine



**Braden Blankenship, MD**  
Family Medicine



**Jeremy Engel, MD**  
Family Medicine



**Michael Grainger, MD**  
Family Medicine



**William Hammons, MD**  
Family Medicine



**Patrick Meade, MD**  
Family Medicine



**Debra Schulte, MD**  
Family Medicine



**Michael Schulte, MD**  
Family Medicine

# BURLINGTON

## Primary Care

6105 First Financial Drive  
Burlington, KY 41005

(859) 586-8200



**Mark Kolar, MD**  
Family Medicine



**Kruti Patel, MD**  
Family Medicine



**Brittany Sullivan, MD**  
Family Medicine



**Amanda Frazier, APRN**  
Family Medicine



**Laura Jacobs, APRN**  
Family Medicine

# BUTLER

## Primary Care

79 Country Club Drive  
Butler, KY 41006

(859) 654-2283



**Rebecca Osborne Lewis, MD**  
Family Medicine



**Brian Schack, MD**  
Internal Medicine & Pediatrics



**James Schack, MD**  
Family Medicine



**Michael Schafer, MD**  
Family Medicine



**Kathleen Browning, APRN**  
Family Medicine



**Erika Spaulding, APRN**  
Family Medicine

# COLD SPRING

## Primary Care

125 St. Michael Drive  
Cold Spring, KY 41076

(859) 781-4111



**Bryan Berman, MD**  
Family Medicine



**Stacey Bishop, MD**  
Family Medicine



**Vickie Chan, MD**  
Family Medicine



**Danielle Herbert, MD**  
Family Medicine



**Suzanne Kress, MD**  
Family Medicine



**Douglas Miles, MD**  
Family Medicine



**Heidi Sharp, MD**  
Family Medicine



**Robert Tracy, MD**  
Family Medicine



**Susan Wenk, MD**  
Family Medicine



**Nancy Beach, PA-C**  
Family Medicine



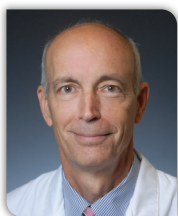
**William Wring, APRN-W**  
Family Medicine

# COVINGTON

## Internal Medicine

1500 James Simpson Jr. Way, Suite 201  
Covington, KY 41011

(859) 655-8980



**Carl Gandola, MD**  
Internal Medicine



**Srilakshmi Mukalla, MD**  
Internal Medicine



# COVINGTON

## Primary Care

1500 James Simpson Jr. Way, Suite 201  
Covington, KY 41011

(859) 655-4111



**Mark Boyd, MD**  
Family Medicine



**Patrick Burns, MD**  
Family Medicine



**Tim Keller, MD**  
Family Medicine



**Melissa Mauntel, MD**  
Family Medicine



**Bradley Patterson, MD**  
Family Medicine



**Alisha Rust, DO**  
Family Medicine



**Deepti Sharma, MD**  
Family Medicine



**Jennifer Haigis, APRN**  
Family Medicine



**Kelly Lown, APRN**  
Family Medicine

# CRESTVIEW HILLS

## Internal Medicine

334 Thomas More Parkway, Suite 200  
Crestview Hills, KY 41017

(859) 341-0288



**Del Burchell, MD**  
Internal Medicine



**Christopher Heeb, MD**  
Internal Medicine



**Terry McDannold, MD**  
Internal Medicine



**Mark Meier, MD**  
Internal Medicine



**Beverly Schuler, DO, FACP**  
Internal Medicine



**Kara Shay, MD**  
Internal Medicine



**Christopher Smith, MD**  
Internal Medicine



**Barry Wendt, MD**  
Internal Medicine



**Melissa Brueggemann, APRN**  
Internal Medicine



**Mistie Collins, APRN**  
Internal Medicine

# CRESTVIEW HILLS

## Internal Medicine & Pediatrics

334 Thomas More Parkway, Suite 200  
Crestview Hills, KY 41017

(859) 578-3400



**David J Bailey, MD**  
Internal Medicine & Pediatrics



**Jeffrey C Burgher, MD**  
Internal Medicine & Pediatrics



**Kimberly Deringer, MD**  
Internal Medicine & Pediatrics



**Jennifer Ernst-Pierson, MD**  
Internal Medicine & Pediatrics



**Michael Geiger, MD**  
Internal Medicine & Pediatrics



**Jon Minzner, MD**  
Internal Medicine & Pediatrics



**Donald Price, MD**  
Internal Medicine & Pediatrics

# CRESTVIEW HILLS

## Pediatrics

334 Thomas More Parkway, Suite 100  
Crestview Hills, KY 41017

(859) 341-3383



**Jeffrey Janning, MD**  
Pediatrics



**Adam Reis, MD**  
Pediatrics



**Lesley Weghorn, MD**  
Pediatrics

# CRITTENDEN

## Primary Care

405 Violet Road  
Crittenden, KY 41030

(859) 428-1610



**Alisa Christensen, DO**  
Family Medicine



**Joseph Hartig, MD**  
Internal Medicine & Pediatrics



**Kathie Morgan, MD**  
Family Medicine



**Viral Patel, DO**  
Family Medicine



**Steven Sterneberg, MD**  
Family Medicine



**Lisa Arehart, APRN**  
Family Medicine



**Leah Thompson, APRN**  
Family Medicine

# DRY RIDGE

## Primary Care

19 South Main Street  
Dry Ridge, KY 41035

(859) 823-5441



**Troy Ashcraft, DO**  
Family Medicine



**Jonathan Byers, MD**  
Family Medicine



**Sandra Utter, MD**  
Family Medicine



**Brian Melton, APRN**  
Family Medicine

# EDGEWOOD

## Primary Care

830 Thomas More Parkway  
Edgewood, KY 41017

(859) 301-8686



**Michael Minning, MD**  
Family Medicine



**Alexa Summe, DO**  
Family Medicine



**Kimberly Vormbrock, MD**  
Family Medicine, Obstetrics



**Jessica Vaniglia, APRN**  
Family Medicine



**Kaylae Whisman, APRN**  
Family Medicine

# FLORENCE

## Pediatrics

7370 Turfway Road, Suite 200  
Florence, KY 41042

(859) 212-5025



**Jaclyn Anderson, MD**  
Pediatrics



**Brandie Chan, MD**  
Pediatrics



**Kimberly Daly, MD**  
Pediatrics



**Catherine DeFoor, MD**  
Pediatrics



**Amy Heisel, MD**  
Pediatrics



**Catherine Hughes, MD**  
Pediatrics



**John La Count, MD**  
Pediatrics



**Brandon McHenry, DO**  
Pediatrics



**Erin Schaeffer, APRN, DPN**  
Pediatrics



**Nancy Warren, APRN, DNP**  
Pediatrics



# FLORENCE EWING

## Primary Care

7766 Ewing Boulevard, Suite L  
Florence, KY 41042

(859) 371-1153



**Oliver Benes, MD**  
Family Medicine



**Mark Sander, MD**  
Family Medicine



**Ria Santos, MD**  
Family Medicine



**Elizabeth Velazquez, MD**  
Family Medicine



**Mary Austin, APRN**  
Family Medicine



**Barbara Lehman, APRN**  
Family Medicine



**Amy Rennekamp, APRN**  
Family Medicine

# FLORENCE TURFWAY

## Primary Care

7370 Turfway Road, Suite 100  
Florence, KY 41042

(859) 212-4700



**Curtis Dorsch, MD**  
Internal Medicine & Pediatrics



**Douglas Goderwis, MD**  
Internal Medicine & Pediatrics



**Gregory Mullen, MD**  
Family Medicine



**Joseph VonderBrink, MD**  
Family Medicine



**Michael Duncan, APRN**  
Family Medicine



**Carmen Woolums, PA-C**  
Family Medicine

# FORT MITCHELL

## Primary Care

2300 Chamber Center Drive, Suite 200  
Fort Mitchell, KY 41017

(859) 341-3114



**Robert Baker, MD**  
Family Medicine



**Jeffrey Blau, MD**  
Family Medicine



**Neel Desai, MD**  
Family Medicine



**Wesley F Dunaway, MD**  
Family Medicine



**Michael Gieske, MD**  
Family Medicine



**Amanda Gastright, APRN**  
Family Medicine



**Shelby Thornton, APRN**  
Family Medicine



**Jennifer Wilson, APRN**  
Family Medicine

# GREENDALE

## Primary Care

1640 Flossie Drive  
Greendale, IN 47025

(812) 496-2808



**Laura Allen, MD**  
Family Medicine



**Eugene Groysman, MD**  
Family Medicine



**James Hahn, MD**  
Pediatrics, Sports Medicine

# HEBRON CONNER

## Primary Care

2200 Conner Road, Suite B  
Hebron, KY 41048

(859) 442-6600



**John Castaneda, MD**  
Family Medicine



**Gina Grove, MD**  
Family Medicine



**Amy Haney, MD**  
Family Medicine



**Meghan Markovich, MD**  
Internal Medicine & Pediatrics



**Lauren Jones, APRN**  
Family Medicine



**Kathleen O'Brien, APRN**  
Family Medicine

# HEBRON LITTON

## Primary Care

1980 Litton Lane  
Hebron, KY 41048

(859) 334-8700



**Michael Dragan, MD**  
Family Medicine



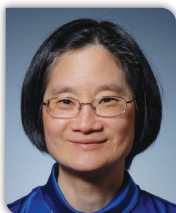
**Payal Kohli, MD**  
Family Medicine



**Robert Otte, MD**  
Family Medicine



**James Stewart, MD**  
Family Medicine



**Gigi A Tcheng, MD**  
Family Medicine



**Donald McKenzie, PA-C**  
Family Medicine

# INDEPENDENCE

## Primary Care

135 Courthouse Crossing  
Independence, KY 41051

(859) 356-6800



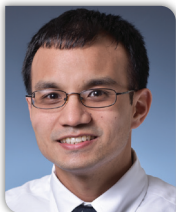
**Mark Bowling, MD**  
Family Medicine



**Donna Pleiman, MD**  
Family Medicine



**Tasheena Slone, MD**  
Family Medicine



**Gabriel Ymalay, MD**  
Family Medicine



**Sherri Jackson, APRN**  
Family Medicine



**Christina Lewis, APRN**  
Family Medicine



**Deborah Truesdell, APRN**  
Family Medicine

# NEWPORT/FT. THOMAS

## Primary Care

1400 North Grand Avenue  
Newport, KY 41071

(859) 912-7193



**Laura Barczewski, MD**  
Family Medicine



**Tyler Browning, MD**  
Family Medicine  
Sports Medicine



**Sherri Schwartz, MD**  
Family Medicine



# **SOUTHGATE**

## **Internal Medicine**

525 Alexandria Pike, Suite 300  
Southgate, KY 41071

(859) 781-2210



**Danilo Calderon, MD**  
Internal Medicine



**Niva Khan, MD**  
Internal Medicine



**Gary Seward, MD**  
Internal Medicine



**Kelly Bishop, APRN**  
Internal Medicine



**Iman Eltay, PA-C**  
Internal Medicine

# TAYLOR MILL

## Primary Care

5522 Taylor Mill Road  
Taylor Mill, KY 41015

(859) 491-2855



**Laura Foor, DO**  
Family Medicine



**Simon Lovasco, MD**  
Family Medicine



**Esther Saalfeld, MD**  
Family Medicine



**Stephanie Stirrat, MD**  
Family Medicine



**Cynthia Planeaux, APRN**  
Family Medicine

# UNION MT. ZION

## Primary Care

1808 Mt. Zion Road  
Union, KY 41091

(859) 301-7210



**Robert Fitz, MD**  
Internal Medicine & Pediatrics



**Corey Gallus, DO**  
Family Medicine



**Melonie Proctor, DO**  
Family Medicine



**Brian Walters, MD**  
Family Medicine



**Mary Kaiser, APRN**  
Family Medicine

# UNION US 42

## Primary Care

8726 US Highway 42  
Florence, KY 41042

(859) 384-2660



**Matthew Barth, MD**  
Family Medicine



**Michael Bowlin, MD**  
Family Medicine



**Bradley Gray, DO**  
Family Medicine



**Philip Hartman, MD**  
Family Medicine



**Shaun Jennings, DO**  
Internal Medicine



**Scott Jones, MD**  
Family Medicine



**Dorothy Baker, APRN**  
Family Medicine



**MaryAnn Bowlin, PA-C**  
Family Medicine



**Chrystal Souder, APRN**  
Family Medicine



**Christina Weiland, PA-C**  
Family Medicine

# WALTON

## Primary Care

13260 Service Road  
Walton, KY 41094

(859) 485-4116



**Anne Donovan, MD**  
Family Medicine



**Melissa Larson, MD**  
Family Medicine



**Joseph Martin, MD**  
Internal Medicine & Pediatrics



**Nancy Shupe, MD**  
Family Medicine

# WILLIAMSTOWN

## Primary Care

300 Barnes Road  
Williamstown, KY 41097

(859) 824-8400



**Brennan Burke, MD**  
Family Medicine



**Ford Threlkeld, MD**  
Family Medicine



**Michelle Willoby, MD**  
Family Medicine



**Jennifer Maddox, APRN**  
Family Medicine



# BUSINESS HEALTH

## Mineola

4123 Olympic Boulevard, Suite 150  
Erlanger, KY 41018

(859) 301-2999

## Mt. Zion

10095 Investment Way  
Florence, KY 41042

(859) 301-9050



**Evan Davies, DO**  
Occupational Medicine



**James Keller, MD**  
Occupational Medicine



**Patrick Kunkler, MD**  
Occupational Medicine



**Corinne Moore, PA-C**  
Occupational Medicine



**Dana Parker-Kist, APRN**  
Occupational Medicine



**Jonathan Varney, APRN**  
Occupational Medicine



# BUSINESS HEALTH

## Employer Based Clinics

### Aurora Casket

204 Bridgeway  
Aurora, IN 47001

(812) 926-3133

### Mubea

8200 Dixie Highway  
Florence, KY 41042

(859) 212-0494

### Nucor

4831 US Highway 42 W  
Ghent, KY 41045

(859) 904-4411



**Marianne Jansen, MD**  
Family Medicine  
Aurora Casket



**Bradford Quatkemeyer, MD**  
Family Medicine  
Mubea



**Isabella Isbell, APRN**  
Family Medicine  
Nucor



**Olivia LaFollette, APRN**  
Family Medicine  
Nucor

# CONCIERGE COMPLETE

2300 Chamber Drive  
Ft. Mitchell, KY 41017

(859) 655-7040



**Joshua Bengé, MD**  
Family Medicine



**Sofia Qureshi, MD**  
Family Medicine



**Jessica Hall, APRN**  
Family Medicine

*Concierge*  
C O M P L E T E

# GERIATRICS

1500 James Simpson Jr. Way, Suite 201  
Covington, KY 41011

(859) 912-7211



**Brittany Calico, DO**  
Geriatrics



**Bahar Mittal, MD**  
Geriatrics



**Maria Pavlou, MD**  
Geriatrics



**Mara Tomaszewski, MD**  
Geriatrics



**Rajiv Verma, MD**  
Geriatrics



**Brooke Bonow, APRN**  
Geriatrics



**Ashley Gribbins, APRN**  
Geriatrics



**Tracy Stephens, APRN**  
Geriatrics

# HOSPITALISTS

## Edgewood

1 Medical Village Drive  
Edgewood, KY 41017

## Ft. Thomas

85 North Grand Avenue  
Ft. Thomas, KY 41075

## Florence

4900 Houston Road  
Florence, KY 41042

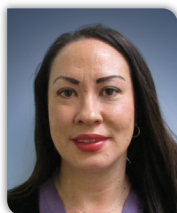
(859) 301-8074



**Jordan Adler, MD**  
Internal Medicine



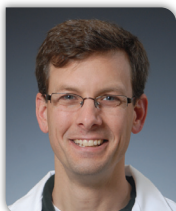
**Tarek Anjari, MD**  
Internal Medicine



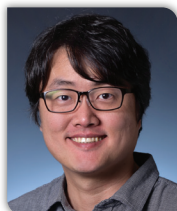
**Patricia Back, MD**  
Internal Medicine



**Bradley Bankers, MD**  
Internal Medicine



**David Banks, MD**  
Internal Medicine



**Soung Cho, MD**  
Internal Medicine



**Kevin Connelly, MD**  
Internal Medicine



**James Conner, MD**  
Internal Medicine



**Brandon Cowan, MD**  
Internal Medicine



**Kristo Curi, MD**  
Internal Medicine



**Rajbir Dhaliwal, MD**  
Internal Medicine



**Chanti Flanagan, MD**  
Family Medicine



**Farzin Foruhari, MD**  
Internal Medicine



**Richard Gaston, MD**  
Family Medicine



**Sashenka Gabriel, MD**  
Family Medicine



**Kevin Goetz, MD**  
Internal Medicine



**Ravinderjit Hans, MD**  
Internal Medicine



**Amanda Hemmer, MD**  
Family Medicine



**Sonja Heuker, MD**  
Internal Medicine



**Deepthi Jaligama, MD**  
Internal Medicine



**Ashok Jarkani, MD**  
Family Medicine



**Patricia Julien, MD**  
Family Medicine



**Jamie Kmety, MD**  
Internal Medicine



**Dhanashri Kohok, MD**  
Internal Medicine



**Edward Krusling, MD**  
Family Medicine



**Olivia Kuper, MD**  
Family Medicine



**Rajeev Kurapati, MD**  
Family Medicine



**Emily Laib, MD**  
Internal Medicine



**Barbara Lewis, MD**  
Internal Medicine



**K Andrew Martin, MD**  
Internal Medicine



**Patrick McGlasson, DO**  
Family Medicine



**Ephese Moise, MD**  
Family Medicine



**Judy Neff, MD**  
Internal Medicine



**Gautam Paul, MD**  
Internal Medicine



**Rhonda Pfaff, MD**  
Family Medicine



**Cruff Renard, MD**  
Internal Medicine



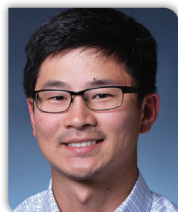
**Gurjeet Sandhu, MD**  
Internal Medicine



**Piam Shanehsaz, MD**  
Internal Medicine



**Adam Slone, DO**  
Internal Medicine



**Matthew Sugimoto, MD**  
Internal Medicine



**Maria Torregroza-Sanchez, MD**  
Internal Medicine

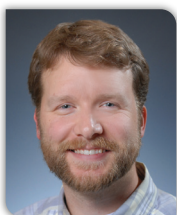


**Niraj Upadhayay, MD**  
Internal Medicine





**Robert Wagner, MD**  
Internal Medicine



**J Brandon Watson, DO**  
Internal Medicine



**Matthew Wenker, MD**  
Internal Medicine



**Chris Wong, MD**  
Family Medicine



**Robert Wyenandt, MD**  
Family Medicine



**Jeffrey Yates, MD**  
Internal Medicine



**Tracey Adams, APRN**  
Internal Medicine



**Sandra Alexander-Lewis, APRN**  
Family Medicine



**Joanna Bloomer, APRN**  
Internal Medicine



**Crystal Eastridge, APRN**  
Internal Medicine



**Melodie Ellis, APRN**  
Internal Medicine

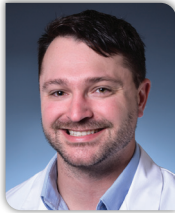


**Kathleen Houlehan, APRN**  
Internal Medicine





**Catherine Kiely, APRN**  
Family Medicine



**Cody Kirschner, PA-C**  
Internal Medicine



**Meredith Medeyinlo, APRN**  
Internal Medicine



**Angela Nelson, APRN**  
Internal Medicine



**Margarita Nord, APRN**  
Internal Medicine



**Pamela Overton, APRN**  
Family Medicine



**Anita Phillips, APRN**  
Family Medicine



**Alicia Rice, APRN**  
Internal Medicine

# ADDICTION MEDICINE

- **Partnering with the Hazelden Betty Ford Foundation to provide evidence based 12 Step Facilitated Treatment including:**
  - KY Board of Nursing assessments and Casey's Law assessments for patients considering or in need of treatment.
  - Medication assisted treatment.
  - Treatment of co-occurring disorders.
  - Therapy - individual, outpatient groups, and intensive outpatient groups.
  - Case Management including Targeted Case Management.
  - Peer support services.
  - OPEN 12 Step meetings during the week.
- **Collaborate with Baby Steps to provide treatment for women with SUD during and after pregnancy.**
- **Recovery Treatment Team at Fort Thomas, 2SW for patients with SUD on long term IV antibiotics.**

Journey Recovery Center

351 Centre View Boulevard  
Crestview Hills, KY 41017

(859) 757-0717



**Paul Guenther, MD**  
Addiction Medicine



**Mina Kalfas, MD**  
Addiction Medicine  
Behavioral Health



**Teresa Koeller, MD**  
Addiction Medicine,  
Behavioral Health,  
Family Medicine



**Christina Wise, MD**  
Behavioral Health  
Psychiatry



**Jordan Brown, LPCC**  
Addiction Medicine  
Behavioral Health



**Karlee Daniels, APRN**  
Addiction Medicine  
Behavioral Health



**Christy Gillespie, LCSW**  
Social Work



**Miran McClendon,  
LCADC, LPCC**  
Addiction Medicine  
Behavioral Health



**Angela Miracle, APRN**  
Addiction Medicine  
Behavioral Health



**Sally Plummer-Bratton, LPCC**  
Addiction Medicine  
Behavioral Health



**Stacie Selfe, PhD**  
Addiction Medicine  
Behavioral Health

# BEHAVIORAL HEALTH

## Bringing change to mind: let's talk mental health.

- Mental Health evaluations throughout the lifespan.
- Medication evaluation and management.
- Outpatient therapy and counseling.
- Psychological and Neuropsych testing.
- Group therapy for depression and anxiety.

### Crestview Hills

334 Thomas More Parkway, Suite 120  
Crestview Hills, KY 41017

(859) 301-5901

### Greendale

1640 Flossie Drive  
Greendale, IN 47025

(859) 301-5901

### Newport/Ft. Thomas

1400 North Grand Avenue  
Newport, KY 41071

(859) 301-5901

### SUN Behavioral Health

820 Dolwick Drive  
Erlanger, KY 41018

(859) 429-5188

### Thomas More

333 Thomas More Parkway  
Crestview Hills, KY 41017

(859) 301-5901

### Walton

13260 Service Road  
Walton, KY 41094

(859) 301-5940



**Anthony Alvarez, MD**  
Crestview Hills  
SUN Behavioral Health



**Bethany Campbell, MD**  
Crestview Hills



**Shanel Chandra, MD**  
Crestview Hills



**Rebecca Daily, MD**  
Crestview Hills



**Jill Jones, MD**  
SUN Behavioral Health



**Kenneth Lin, MD**  
Crestview Hills



**Darlinda Minor, MD**  
Crestview Hills



**Samreen Munir, MD**  
SUN Behavioral Health



**James Petit, MD**  
SUN Behavioral Health



**Annette Reynolds, MD**  
SUN Behavioral Health



**Sasa Strunjas, MD**  
Crestview Hills  
SUN Behavioral Health



**Nelson Tauro, MD**  
SUN Behavioral Health



**Anthony Vita, MD**  
SUN Behavioral Health



**Rodney Vivian, MD**  
SUN Behavioral Health



**Piotr Zieba, MD**  
Crestview Hills



**Amerika Adamowski, APRN**  
Crestview Hills



**Benjamin Anderson, PsyD**  
Newport/Ft. Thomas



**Lisa Arrasmith, APRN**  
Crestview Hills  
Greendale



**Andrew Arthur, LMFT**  
Greendale



**Krista Barnett, APRN**  
SUN Behavioral Health



**Perry Bohanon, APRN**  
Crestview Hills



**Adrienne Bussard, PA-C**  
Crestview Hills



**Alicia Davidson, APRN**  
SUN Behavioral Health



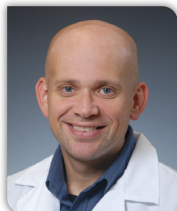
**James Davis, PsyD**  
Crestview Hills



**Lora Davis, LCSW**  
Crestview Hills



**Amanda Galer, LCSW**  
Crestview Hills



**Jason Gregg, APRN**  
Walton



**Tonya Kallmeyer, PA-C**  
Crestview Hills



**Laura Kremer, PA-C**  
Crestview Hills



**Madeleine Lansberry, PA-C**  
Crestview Hills





**Jaclyn Lunsford, PA-C**  
Crestview Hills



**Molly Lutz, APRN**  
Crestview Hills  
SUN Behavioral Health



**Melissa Mauser, LCSW**  
Crestview Hills  
Thomas More



**Connie Murdock, LCSW**  
Crestview Hills



**Brent Plummer, APRN**  
Crestview Hills  
SUN Behavioral Health



**Jennifer Quiogue, APRN**  
SUN Behavioral Health



**Marjorie Reeves, APRN**  
SUN Behavioral Health



**Beth Rosen, PsyD**  
Crestview Hills



**Jennifer Sampang, APRN**  
Crestview Hills



**Jennifer Strimpfel, PhD**  
Crestview Hills



**Jessica Taylor, LCSW**  
Crestview Hills



**Robert Wells, PhD**  
Crestview Hills



**Danielle Wilson, APRN**  
SUN Behavioral Health

# CARDIAC SURGERY

St. Elizabeth Cardiac Surgeons provide coronary, valve, and aortic surgery. They perform both open surgery and minimally invasive options such as TAVR and MitraClip in collaboration with interventional cardiologists.

**St. Elizabeth Cardiac Surgery is ranked 3 out of 3 stars by the Society of Thoracic Surgeons.**

*(based on the most recent data period, January - December 2018)*

## Edgewood

20 Medical Village Drive, Suite 271  
Edgewood, KY 41017

(859) 301-9010



George Christensen, DO



James Locher, Jr, MD

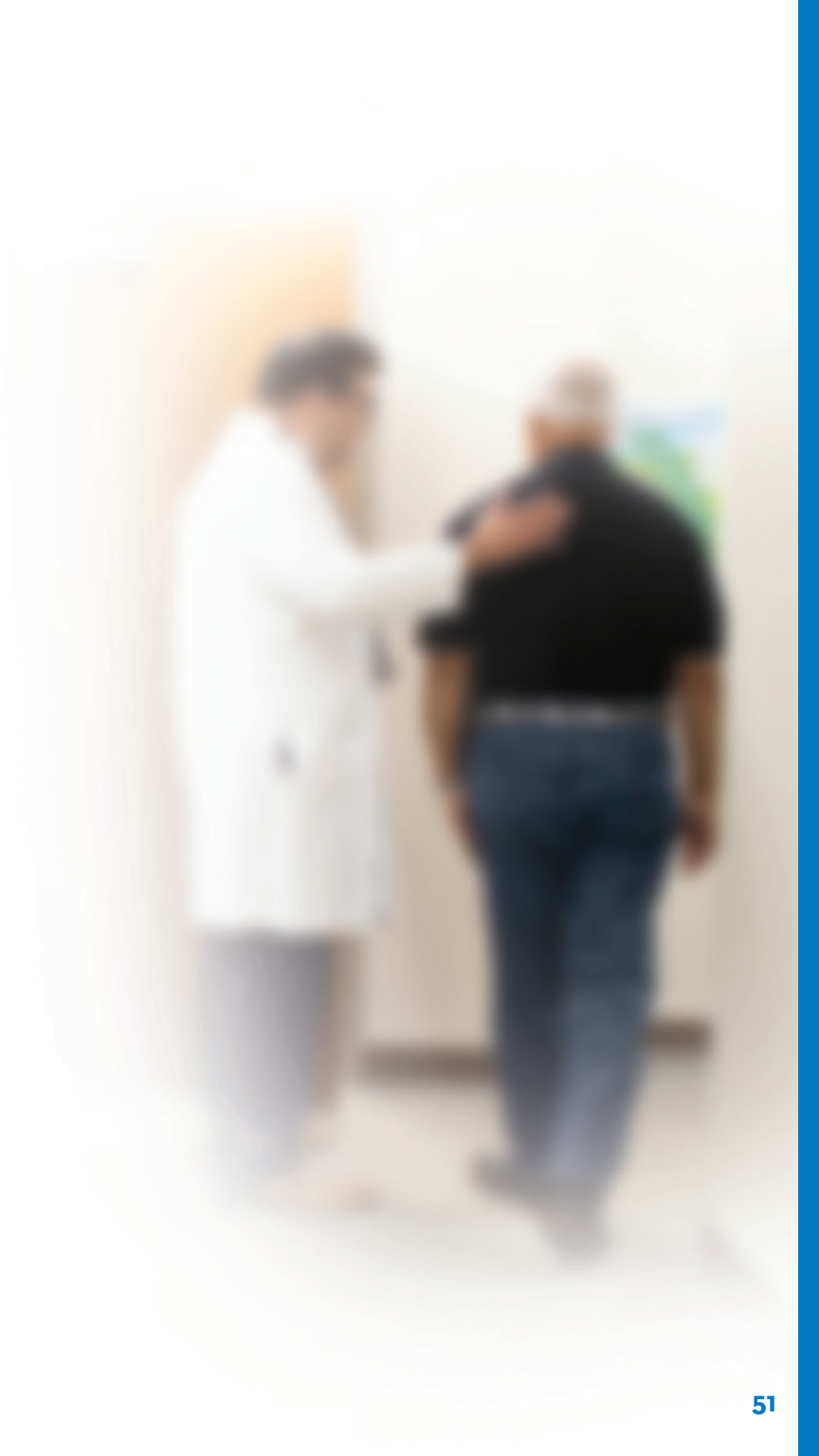


Victor Schmelzer, MD



Karl Ulicny, MD





# CARDIOLOGY

- Acute and Chronic Comprehensive Cardiac Services.
- Expert Cardiovascular Testing Interpretation.
- Determining who needs cardiac sub-specialty referral.
- New Patient appointments within 48 hours.

## Aurora

204 Bridgeway Street  
Aurora, IN 47001

(859) 331-0774

## Covington

1500 James Simpson Jr. Way, Suite 205  
Covington, KY 41011

(859) 655-9500

## Crestview Hills Centre View

380 Centre View Boulevard  
Crestview Hills, KY 41017

(859) 341-3015

## Crestview Hills Thomas More

350 Thomas More Parkway, Suite 280  
Crestview Hills, KY 41017

(859) 426-0800

## Edgewood

900 Medical Village Drive  
Edgewood, KY 41017

(859) 331-0774

## Florence

7370 Turfway Road, Suite 109  
Florence, KY 41042

(859) 525-0005

## Newport/Ft. Thomas

1400 North Grand Avenue  
Newport, KY 41071

(859) 905-3073

## Owenton

120 Progress Way  
Owenton, KY 40359

(859) 331-0774

## Williamstown

238 Barnes Road  
Williamstown, KY 41097

(859) 525-0005



**Mohan Brar, MD**  
Covington, CH-Centre View  
Newport/Ft. Thomas  
Williamstown



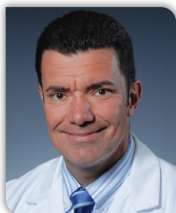
**Daniel Courtade, MD**  
Covington, CH-Centre View  
Newport/Ft. Thomas  
Williamstown



**Darryl Dias, MD**  
Aurora, Edgewood  
Newport/Ft. Thomas  
Owenton



**Saadeddine Dughman, MD**  
Edgewood &  
Newport/Ft. Thomas



**Kevin Fitzgerald, MD**  
CH-Thomas More  
Florence, Williamstown



**Mark Gilbert, MD**  
Covington, CH-Thomas More  
Florence, Newport/Ft. Thomas  
Williamstown



**Richard Grover, MD**  
CH-Centre View



**Gregory P Houlihan, MD**  
Covington  
CH-Centre View  
Newport/Ft. Thomas



**Abiodun Ishola, MD**  
Covington  
CH-Centre View  
Florence



**Mark Jordan, MD**  
Edgewood  
Newport/Ft. Thomas



**Saeb Khoury, MD**  
Covington  
CH-Thomas More  
Florence



**Ned Mehlman, MD**  
CH-Thomas More, Florence  
Newport/Ft. Thomas  
Williamstown



**Kevin Miller, MD**  
Covington  
CH-Centre View  
Newport/Ft. Thomas



**Jeffrey Reichard, MD**  
CH-Thomas More  
Florence  
Williamstown



**Jerome Schutzman, MD**  
Aurora  
Edgewood  
Newport/Ft. Thomas



**Robert Strickmeyer, MD**  
CH-Thomas More  
Florence  
Williamstown



**DP Suresh, MD**  
Covington  
CH-Thomas More  
Florence



**Kami Tehrani, DO**  
Covington  
CH-Centre View  
Newport/Ft. Thomas



**Robert Toltzis, MD**  
Covington  
CH-Centre View  
Newport/Ft. Thomas



**Daniel Zalkind, MD**  
Covington  
CH-Thomas More, Florence  
Newport/Ft. Thomas



**Regina Brooks-Hall, APRN**  
Edgewood



**Lauren Drotleff, APRN**  
CH-Centre View



**Julie Gallatin, APRN**  
Edgewood



**Carmen Grandt, PA-C**  
Edgewood



**Andrea Green, PA-C**  
Covington  
CH-Thomas More  
Florence



**Marla Johnson, APRN**  
Edgewood



**Amy Riegler, APRN**  
CH-Centre View



**Angela Riley, APRN**  
Edgewood



**Christina Staggs, APRN**  
Edgewood



**Darlene Tierney, APRN**  
Edgewood  
Newport/Ft. Thomas



**Brett Welch, APRN**  
Covington  
CH-Thomas More  
Florence



**Christina Marie Wolf, APRN**  
CH-Centre View

# DERMATOLOGY

- **Medical treatments for a wide range of skin conditions including:**
  - Blu-light therapy
  - Intense pulsed light
  - Phototherapy
  - Xtrac treatment
- **Cosmetic treatments include:**
  - Botox/Xeomin/Dysport
  - Fillers – Restylane
  - Coolsculpting
  - Laser tattoo removal
  - PDL – vascular lesions, rosacea
- **IPL – lentigines/photofacial**

## Crestview Hills

651 Centre View Boulevard, Building 19  
Crestview Hills, KY 41017

## Florence

7370 Turfway Road, Suite 370  
Florence, KY 41042

## Highland Heights

2626 Alexandria Pike  
Highland Heights, KY 41076

(859) 371-3376



**Kristen Ahern, MD**  
Florence



**Christina Alexander, MD**  
Crestview Hills  
Highland Heights



**Natalie Hone, MD**  
Florence



**Drew Kurtzman, MD**  
Crestview Hills  
Highland Heights



# DIABETIC CARE & ENDOCRINOLOGY

**Local convenience, global expertise.**

- **The most comprehensive system for diabetes and endocrine care in the Greater Cincinnati region.**
- **Services and treatments for endocrine and metabolic disorders, including:**
  - Comprehensive Type 2 Diabetes education
  - Individual education provided for Type 1 and Type 2
  - Insulin pump and sensor program
  - Diabetes and pregnancy education
  - Medical Nutrition Therapy (*MNT*)

## Covington

1500 James Simpson Jr. Way, Third Floor  
Covington, KY 41011

(812) 496-2808

## Crittenden

405 Violet Road  
Crittenden, KY 41030

(859) 428-1610

## Greendale

1640 Flossie Drive  
Greendale, IN 47025

(859) 655-8910

## Williamstown

300 Barnes Road  
Williamstown, KY 41097

(859) 824-8400





**Ann Beers, MD**  
Covington



**Jaspreet Chahal, MD**  
Covington



**Wael Eid, MD**  
Covington  
Greendale



**Bradley Eilerman, MD**  
Covington  
Williamstown



**Aileen Heras-Herzig, MD**  
Covington



**Linda Hermiller, MD**  
Covington



**Susanne Bodine, APRN**  
Covington, Crittenden  
Greendale, Williamstown



**Rebecca Flora, APRN**  
Covington



**Jalean Heikenfeld, APRN**  
Covington, Greendale  
Williamstown



**Julie Tewes, APRN**  
Covington

# ELECTROPHYSIOLOGY

- Cardiologists' fellowship trained in cardiac electrophysiology.
- Diagnose and treat electrical issues of the heart or abnormal heart rhythms.
- Implant and manage pacemakers, implantable cardiac defibrillators and implantable loop recorders.
- Perform Watchman procedures for stroke prevention and ablations to manage abnormal heart rhythms.

## Arrhythmia Center

20 Medical Village Drive, Suite 177  
Edgewood, KY 41017

(859) 331-3353



Thomas Carrigan, MD



Christian J Hays, MD



Mohamad Sinno, MD



Barbara Bell, APRN



Krista Fowler, APRN



Deanna Winter, APRN



# GASTROENTEROLOGY & ENDOSCOPY

- **Common procedures include:**
  - Colonoscopy
  - Esophagogastroduodenoscopy (EGD)
  - Endoscopic Retrograde Cholangiopancreatography (ERCP)
  - Gastrostomy Tube Placements
  - Hemorrhoid Banding
  - Endoscopic Ultrasound
  - Capsule Endoscopy
  - Bravo pH Probe - A 48 hour test which allows for evaluation of reflux symptoms
  - Esophageal Manometry
  - IV Remicade Therapy for Crohn's Disease
  - Fibroscan
- **Collaborate with the Specialty Pharmacy for HEP C treatments.**
- **Procedures performed at the Edgewood, Florence, Ft. Thomas, and Grant locations, as well as our ambulatory center in Crestview Hills.**

Crestview Hills

651 Centre View Boulevard  
Crestview Hills, KY 41017

(859) 331-6466



Chike Anusionwu, MD



Suzana Brozovic,  
MD, PhD, DDS



Suma Chennubhotla, MD



Amy DiChiara, MD



Mustapha El-Halabi, MD



Michael Hsu, MD



Kartikkumar Jinjuvadia, MD



Aditya Kalakonda, MD



Z.A. Saeed, MD



Aishwarya Shyamraj, MD



Philip Williams, MD



Rae Lynn Couch, APRN



Jenna Ionna, APRN



Carrie Linville, APRN



Kelly Rawe, APRN



Holly Vandergriff, APRN

# GENERAL SURGERY

**Board certified physicians specializing in evaluating, diagnosing and surgically treating a broad spectrum of disease processes. Utilizing the most advanced technologies, a variety of surgical options including minimally invasive surgery and robotic surgery are available.**

**St. Elizabeth Physicians surgical services include:**

- General Surgery
- Acute Care Surgery
  - Emergency General Surgery
  - Surgical Critical Care
- Bariatric Surgery
- Colorectal Surgery
- Surgical Oncology
- Office-based procedures and treatments

## Breast Center Edgewood

1 Medical Village Drive  
Edgewood, KY 41017

(859) 655-7400

## Florence

7370 Turfway Road, Suite 150  
Florence, KY 41042

(859) 578-5880

## Ft. Thomas

85 North Grand Avenue, 2nd Floor  
Ft. Thomas, KY 41075

(859) 781-2628

## Medical Village Ste. 132

20 Medical Village Drive, Suite 132  
Edgewood, KY 41017

(859) 578-5880

## Medical Village Ste. 254

20 Medical Village Drive, Suite 254  
Edgewood, KY 41017

(859) 344-1600

## Newport

1400 North Grand Avenue  
Newport, KY 41071

(859) 441-3818

## Owenton

120 Progress Way  
Owenton, KY 40359

(859) 344-1600

## Williamstown

238 Barnes Road  
Williamstown, KY 41097

(859) 824-8104



**Patricia Abello, MD**  
Breast Surgery  
General Surgery  
Florence, Ft. Thomas  
Medical Village Ste. 132



**James Bardgett, MD**  
Vascular Surgery  
General Surgery  
Newport  
Medical Village Ste. 254



**Jai Bikhchandani, MD**  
Colon & Rectal Surgery  
General Surgery  
Florence, Ft. Thomas  
Medical Village Ste. 132



**Vail Brennan, DO**  
Bariatric Surgery  
General Surgery  
Florence  
Medical Village Ste. 254



**Michael Davenport, MD**  
General Surgery  
Medical Village Ste. 254



**Noreen Durrani, MD**  
Acute Care Surgery  
Surgical Critical Care  
Florence, Ft. Thomas  
Medical Village Ste. 132



**John Eldridge, MD**  
General Surgery  
Medical Village Ste. 254



**Anthony England, MD**  
Acute Care Surgery  
Surgical Critical Care  
Florence, Ft. Thomas  
Medical Village Ste. 132



**Audrey Ertel, MD**  
General Surgery  
Florence, Ft. Thomas  
Medical Village Ste. 132



**Leonardo Geraci, DO**  
Acute Care Surgery  
General Surgery  
Florence, Ft. Thomas  
Medical Village Ste. 132



**Zachary Glenn, MD**  
General Surgery  
Medical Village Ste. 254  
Newport



**Michael J Guenther, MD**  
Breast Surgery  
Surgical Oncology  
Breast Center Edgewood  
Medical Village Ste. 254





**Ramesh Kumar, MD**  
Colon & Rectal Surgery  
General Surgery  
Florence, Ft. Thomas  
Medical Village Ste. 132



**Luke Linz, DO**  
Surgical Critical Care  
Medical Village Ste. 132  
Seven Hills Anesthesia  
Contract Employee



**M. Ryan Moon, MD**  
Bariatric Surgery  
& General Surgery  
Florence, Ft. Thomas  
Medical Village Ste. 132



**Heidi Murley, MD**  
Breast Surgery  
General Surgery  
Florence, Ft. Thomas  
Medical Village Ste. 132



**Harish Nirujogi, MD**  
Bariatric Surgery  
General Surgery  
Florence, Ft. Thomas  
Medical Village Ste. 132



**Sidney Trogdon, MD**  
General Surgery  
Ft. Thomas  
Medical Village Ste. 254  
Owenton



**Robert Brungs, APRN**  
Acute Care Surgery  
Medical Village Ste. 132



**Emily Crocetti, PA-C**  
Colon & Rectal Surgery  
General Surgery  
Florence, Ft. Thomas  
Medical Village Ste. 132



**Heidi Ducker, APRN**  
Acute Care Surgery  
Edgewood  
Medical Village Ste. 132



**Eric Faris, APRN**  
Acute Care Surgery  
Medical Village Ste. 132



**Mallory Mosko, PA-C**  
Breast Surgery  
General Surgery  
Breast Center Edgewood  
Medical Village Ste. 254

# GYNECOLOGIC ONCOLOGY

Tri-State Gynecologic  
Oncology Clinic at  
St. Elizabeth

1 Medical Village Drive  
Edgewood, KY 41017

(859) 301-2237



Jack Basil, MD



Robert Neff, MD



James Pavelka, MD



Kevin Schuler, MD



# HEART FAILURE

- A multidisciplinary team approach.
- Same day appointments for sick (*heart failure*) patients.
- Close follow up, attention to detail, and emphasis on patient/family education on condition.
- Outpatient office located in Edgewood hospital.

## Heart Failure Center

1 Medical Village Drive  
Edgewood, KY 41017

(859) 301-0124



Aman Ghotra, MD



Deepthi Mosali, MD



Hareeprasad Vongooru, MD

# INFECTIOUS DISEASE

- Committed to providing treatment and management of all critical infections.
- Part of a comprehensive HIV clinic team including social work and Pharm D.
- Partnered with NKY Health Dept. for all HIV patients who are in need of special assistance with medications.

## Crestview Hills

651 Centre View Boulevard  
Crestview Hills, KY 41017

(859) 757-4446



Johnson Britto, DO

# NEUROLOGY

- Cerebrovascular disease, such as stroke or dementia.
- Demyelinating diseases of the central nervous system, such as multiple sclerosis.
- Headache disorders.
- Infections of the brain and nervous system.
- Movement disorders, such as Parkinson's disease.
- Neurodegenerative and neuromuscular disorders, such as Alzheimer's disease, Parkinson's disease, amyotrophic lateral sclerosis, and Myasthenia Gravis.
- Seizure disorders, such as epilepsy.
- Spinal cord disorders.
- Speech and language disorders.

## Crestview Hills

2670 Chancellor Drive, Suite 100  
Crestview Hills, KY 41017

## Greendale

1640 Flossie Drive  
Greendale, IN 47025

## Newport/Ft. Thomas

1400 North Grand Ave.  
Newport, KY 41071

(859) 957-0052



**Ty Brown, MD**  
Crestview Hills



**Stephanie Dalton, DO**  
Crestview Hills  
Greendale



**Vinod Krishnan, MD**  
Crestview Hills  
Newport/Ft. Thomas



**Lindsay Pattison, DO**  
Crestview Hills



**John Webb, MD**  
Crestview Hills



**Cathy Kreimer, APRN**  
Crestview Hills



**Jamie Krusling, APRN**  
Crestview Hills

# OBSTETRICS & GYNECOLOGY

- Limited ultrasound screenings, fetal non-stress testing, colposcopy, LEEP, and diagnosis specific gynecologic ultrasounds performed in the office.
- Extensive NOB orientation for newly pregnant mothers.
- RNs triage clinical calls to determine next steps in order to prevent any delays in patient care.

## Cold Spring

140 Plaza Drive  
Cold Spring, KY 41076

(859) 912-6500

## Edgewood

20 Medical Village Drive, Suite 308  
Edgewood, KY 41017

(859) 331-4665

## Burlington

6105 First Financial Drive  
Florence, KY 41005

(859) 525-1846

## Florence Turfway

7370 Turfway Road, Suite 390  
Florence, KY 41042

(859) 212-5125

## Newport/Ft. Thomas

1400 North Grand Avenue  
Newport, KY 41071

(859) 781-6222



**Kiran Bhatia, MD**  
*Gynecology only*  
Florence Turfway



**Jacqueline Carpenter, DO**  
Burlington  
Newport/Ft. Thomas



**Christina Green, MD**  
Cold Spring, Edgewood  
Florence Turfway



**Lily Hahn, MD**  
Burlington  
Newport/Ft. Thomas





**Stephen Hensley, MD**  
*Gynecology only*  
Cold Spring



**Jonathan Koop, MD**  
Cold Spring, Edgewood  
Florence Turfway



**Abby Loftus-Smith, MD**  
Burlington  
Newport/Ft. Thomas



**Vincent Lubrano, MD**  
*Gynecology only*  
Edgewood



**Amanda Von Hoene, MD**  
Cold Spring, Edgewood  
Florence Turfway



**Steven Willett, MD**  
Burlington  
Newport/Ft. Thomas



**Jennifer Dooley, CNM**  
Cold Spring, Edgewood  
Florence Turfway



**Lisa Downton, CNM**  
Cold Spring, Edgewood  
Florence Turfway



**Katie Feighery, APRN**  
Burlington  
Newport/Ft. Thomas



**Allison Forbes, CNM**  
Cold Spring, Edgewood  
Florence Turfway



**Kelly Ganster, CNM**  
Cold Spring, Edgewood  
Florence Turfway



**Candace Koopman, APRN**  
Cold Spring, Edgewood  
Florence Turfway

# ONCOLOGY & HEMATOLOGY

- Specialize in the care of cancer patients and blood disorders.
- Establish and coordinate care including chemotherapy, radiation therapy, and clinical research studies.
- Center for Precision Medicine and Genomic Health offers genetic screenings for disease treatment and prevention including hereditary and proactive tests.
- The pre-operative Anemia Clinic is available to diagnose and treat anemia prior to surgery.

## Edgewood

20 Medical Village Drive, Suite 200  
Edgewood, KY 41017

(859) 301-4000

## Ft. Thomas

85 North Grand Avenue  
Ft. Thomas, KY 41075

(859) 572-3298

## Grant

238 Barnes Road  
Williamstown, KY 41097

(859) 824-8210

## Lawrenceburg

606 Wilson Creek Road, Suite 130  
Lawrenceburg, IN 47025

(812) 496-4800



**Ivan Bedoya-Appraez, MD**  
Edgewood, Ft. Thomas  
Lawrenceburg



**Lawrence Brennan, MD**  
Edgewood, Ft. Thomas



**William Danneman, MD**  
Edgewood, Ft. Thomas



**Colleen Darnell, MD**  
Edgewood, Ft. Thomas, Grant



**Daniel Flora, MD**  
Edgewood, Ft. Thomas



**Douglas Flora, MD**  
Edgewood



**Brooke Phillips, MD**  
Edgewood



**Mary Redden-Borowski, MD**  
Edgewood



**Christy Sapp, MD**  
Edgewood



**John Winkelmann, MD**  
Edgewood, Ft. Thomas



**Ashley Coleman, APRN**  
Edgewood



**Kendall Diebold, APRN**  
Edgewood



**Stephanie Herro, APRN**  
Edgewood



**Sarah Krumme, APRN**  
Edgewood



**Alyssa McDonald, APRN**  
Edgewood



**Rose Mulberry, APRN**  
Edgewood, Grant



**Kaitlin Pielage, APRN**  
Edgewood

# OPHTHALMOLOGY

**Providing comprehensive, diagnostic, therapeutic, and surgical services to help diagnose and treat a variety of eye conditions and diseases, including:**

- Blepharitis
- Cataracts
- Chalazion
- Diabetic Retinopathy
- Dry Eye
- Glaucoma
- Headaches related to eye disease
- Macular Degeneration
- Ocular Rosacea
- Retinal vein occlusion
- Strabismus

## Covington

1500 James Simpson Jr. Way, Suite 302  
Covington, KY 41011

(859) 655-3111

## Downtown Cincinnati

105 W. 4th Street, Suite 719 (3rd Floor)  
Cincinnati, OH 45202

(513) 621-2445

## Florence

7370 Turfway Road, Suite 300  
Florence, KY 41042

(859) 746-1990

## Ft. Thomas

40 North Grand Avenue, Suite 204  
Ft. Thomas, KY 41075

(859) 781-3110



**Richard Abrahamson, MD**  
Downtown Cincinnati  
Ft. Thomas



**Zegary Allen, MD**  
Covington



**Charles Breen, MD**  
Florence



**Michael Wehmann, MD**  
Ft. Thomas

# OSTEOPATHIC MANIPULATION MEDICINE

- Providing a new approach to treating pain that does not require surgical or pharmaceutical management.
- Utilizing manual 'hands-on' techniques to improve circulation and correct altered bio-mechanics.
- Techniques include stretching, gentle pressure and resistance.
- Prescription medicine and surgical methods may be used to support the holistic, manual treatment.

## Covington

1500 James Simpson Jr. Way, Suite 201  
Covington, KY 41011

(859) 655-8980

## Crittenden

405 Violet Road  
Crittenden, KY 41030

(859) 428-1610



Ryan Freibert, DO

# PALLIATIVE CARE

- Whole person care for those living with a serious illness.
- Specialized medical care focused on providing relief from pain and other distressing symptoms.
- Focused on improving quality of life for patients and their families.
- Provide an extra layer of support for primary care and specialty physicians.

Edgewood  
1 Medical Village Drive  
Edgewood, KY 41017

(859) 301-4688



Jessica Bokelman, MD



Derrick Strunk, MD



Laura Trice, MD



Brittany Blankenship, APRN



Jennifer Bowling, APRN



Heather Columber, APRN



Jennifer White, APRN

# PHYSIATRY

- **Treatments provided for:**

- Any musculoskeletal problem affecting function
- Spine dysfunction
- Joint pain
- Tendinopathy
- Myopathic muscle pain
- Trigger points
- Peripheral neuropathic pain
- Deconditioning

- **Traditional and Regenerative Interventions:**

- X-ray guided spine injections
- Diagnostic ultrasound and guided injections
- Perineural injections
- Prolotherapy
- Platelet rich plasma (*PRP*)

## Crestview Hills

2670 Chancellor Drive, Suite 100  
Crestview Hills, KY 41017

(859) 957-0052



Michael Bertram, MD

# PODIATRY

- Same day foot and ankle appointments.
- Broad range of care, from nonsurgical methods to state-of-the-art corrective and reconstructive surgical techniques.
- Treatments provided for:
  - Any foot or ankle injury (*a sprain, broken bone, etc.*)
  - Swelling in the foot or ankle.
  - Medical conditions that affect the feet: diabetes, arthritis and poor circulation.
  - Decreased ability to function in certain activities.
  - Heel pain or plantar fasciitis.
  - Bunions or hammertoes.
  - Flat feet or tendon pain.
  - Sports injuries.
  - Skin conditions that affect the feet.
  - Discomfort after standing for long-periods.

## Covington

1500 James Simpson Jr. Way, Suite 301  
Covington, KY 41011

## Crittenden

405 Violet Road  
Crittenden, KY 41030

## Florence

7370 Turfway Road, Suite 320  
Florence, KY 41042

## Greendale

1640 Flossie Drive  
Greendale, IN 47025

## Southgate

525 Alexandria Pike, Suite 230  
Southgate, KY 41071

(859) 212-0175





**Darren Di Iulio, DPM**  
Surgical Podiatry  
Foot & Ankle  
Florence, Greendale  
Southgate



**Matthew Enzweiler, DPM**  
Surgical Podiatry  
Foot & Ankle  
Florence, Southgate



**Patrick Ginney, DPM**  
Surgical Podiatry  
Foot & Ankle  
Florence



**Stephen Mielech, DPM**  
Surgical Podiatry  
Foot & Ankle  
Florence, Southgate



**James Morrow, DPM**  
Surgical Podiatry  
Foot & Ankle  
Crittenden, Florence  
Southgate



**Mark Pell, DPM**  
Surgical Podiatry  
Foot & Ankle  
Covington, Southgate



**Bill Shamsi, DPM**  
Surgical Podiatry  
Foot & Ankle  
Florence, Southgate



**Gregory Worley, DPM**  
Surgical Podiatry  
Foot & Ankle  
Florence



**Brian Crowley, APRN**  
Surgical Podiatry  
Foot & Ankle  
Florence, Southgate

# PULMONOLOGY

- **Advanced treatment offered for all pulmonary conditions, including:**
  - COPD
  - Interstitial lung disease
  - Lung cancer
  - Pulmonary hypertension
- **Specializing in the treatment of moderate and severe COPD.**
- **Multi-disciplinary Lung Nodule team with oncology and cardiothoracic surgery to review all lung cancer screening cat scans.**
- **Multi-disciplinary approach to all ILD cases with Rheumatology.**

Crestview Hills  
651 Centre View Boulevard  
Crestview Hills, KY 41017

(859) 757-2927

Florence  
4900 Houston Road  
Florence, KY 41042

(859) 212-7700

Ft. Thomas  
1400 North Grand Avenue  
Ft. Thomas, KY 41071

(859) 212-7700



**Grant Breazeale, MD**  
Crestview Hills  
Florence, Ft. Thomas



**Latonya Brown-Puryear, MD**  
Crestview Hills  
Florence, Ft. Thomas



**Irfan Budhani, MD**  
Florence, Ft. Thomas



**Steven Campbell, MD**  
Florence, Ft. Thomas  
Crestview Hills



**Ralph Huller, MD**  
Crestview Hills



**Sai Konduri, MD**  
Crestview Hills, Florence  
Ft. Thomas, Crestview Hills



**Chaitanya Mandapakala, MD**  
Crestview Hills, Florence  
Ft. Thomas



**Oluseun Medeyinlo, MD**  
Florence, Ft. Thomas



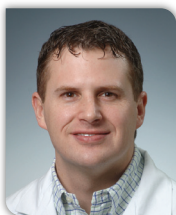
**Neal Moser, MD**  
Crestview Hills



**Akash Vasireddy, MD**  
Crestview Hills, Florence  
Ft. Thomas



**Luis Watanabe-Tejada, MD**  
Crestview Hills, Florence  
Ft. Thomas



**Clay Willmott, MD**  
Crestview Hills



**Dawn Beahr, APRN**  
Crestview Hills, Florence  
Ft. Thomas



**Denise Doan, APRN**  
Crestview Hills, Florence  
Ft. Thomas



**Enis Rosic, APRN**  
Crestview Hills, Florence  
Ft. Thomas



**Susan Walker, APRN**  
Crestview Hills, Florence  
Ft. Thomas

# RADIATION ONCOLOGY

## Edgewood Cancer Care

1 Medical Village Drive  
Edgewood, KY 41017

(859) 301-2238

## Ft. Thomas Cancer Care

85 North Grand Avenue  
Ft. Thomas, KY 41075

(859) 572-2396



**Lauren Castellini, MD**  
Edgewood, Ft. Thomas



**Susan Feeney, MD**  
Edgewood, Ft. Thomas



**Bradley Huth, MD**  
Edgewood, Ft. Thomas



**Pratish Shah, MD**  
Edgewood, Ft. Thomas



**Catherine Holtzapfel, APRN**  
Edgewood, Ft. Thomas

# RECONSTRUCTIVE SURGERY

## The Plastic Surgery Group at St. Elizabeth

### Breast Center Edgewood

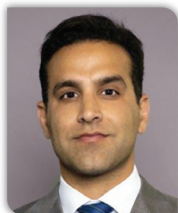
1 Medical Village Drive  
Edgewood, KY 41017

(859) 344-1600

### Medical Village Ste. 254

20 Medical Village Drive, Suite 254  
Edgewood, KY 41017

(859) 344-1600



Shahryar Tork, MD



Richard Williams, MD



Ryan Wilson, MD

# REHABILITATION SERVICES

- **One-on-One Rehab Sessions** - licensed therapists will create a program tailored to each patient to help reach their personal goals.
- **Numerous Locations** - 10 convenient Northern Kentucky locations.
- **A Wide Range of Services** - therapists treating patients of all ages.
- **Common conditions treated:**
  - Arthritis
  - Parkinson's disease
  - Stroke or other traumatic brain injuries
  - Incontinence
  - Osteoporosis
  - Lymphedema
  - Temporomandibular Joint Disorder
  - Vertigo
  - Chronic pain
  - Headaches
- **Specialty services include:**
  - Hand Therapy
  - Speech Therapy
  - Aquatic Therapy
  - Balance Rehabilitation
  - Dry Needling
  - Gait Training
  - Vestibular Rehabilitation
  - Pelvic Floor
  - Work Rehabilitation

## Alexandria

7200 Alexandria Pike  
Alexandria, KY 41001

(859) 572-3700

## Burlington

RC Durr YMCA  
5874 Veterans Way  
Burlington, KY 41005

(859) 212-4200

## Covington

1500 James Simpson, Jr. Way  
Covington, KY 41011

(859) 655-4268

## Crestview Hills

741 Centre View Boulevard, Building #34  
Crestview Hills, KY 41017

(859) 301-2168

## Erlanger Griffin Elite

700 Dolwick Drive  
Erlanger, KY 41018

(859) 212-5600

## Florence

10095 Investment Way, Suite 1  
Florence, KY 41042

(859) 301-9070

## Florence

4900 Houston Road  
Florence, KY 41042

(859) 212-5400

## Ft. Thomas

85 North Grand Avenue  
Ft. Thomas, KY 41075

(859) 572-3120

## Grant

300 Barnes Road  
Williamstown, KY 41097

(859) 824-8217

## Wilder

106 Crossing Drive  
Wilder, KY 41076

(859) 572-2360

# RHEUMATOLOGY & INFUSION

- Services for patients with auto immune diseases.
- Therapeutic Injections.
- Infusion services.
- Inpatient and outpatient services.

## Crestview Hills

651 Centre View Boulevard  
Crestview Hills, KY 41017

(859) 344-1900

## Greendale

1640 Flossie Drive  
Greendale, IN 47025

(859) 344-1900

## Infusion Center-Florence

4900 Houston Road  
Florence, KY 41042

(859) 212-5500



**William Beers, MD**  
Crestview Hills



**Mazen Elyan, MD**  
Crestview Hills  
Greendale



**Abraham Tacang, MD**  
Crestview Hills



**Magdalena Winiarska, MD**  
Crestview Hills



# SLEEP MEDICINE

Evaluation of all sleep-related conditions, including obstructive and central sleep apnea, narcolepsy, and restless leg.

## Crestview Hills

651 Centre View Boulevard  
Crestview Hills, KY 41017

## Florence

7388 Turfway Road, Suite 201  
Florence, KY 41042

## Ft. Thomas

85 North Grand Avenue  
Ft. Thomas, KY 41075

(859) 301-9140



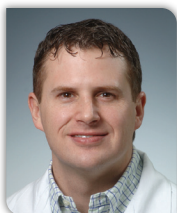
**Ralph Huller, MD**  
Crestview Hills



**Patricia Miles, MD**  
Crestview Hills  
Ft. Thomas



**Neal Moser, MD**  
Crestview Hills



**Clay Willmott, MD**  
Crestview Hills



**Kimberly Rogers, APRN**  
Crestview Hills  
Ft. Thomas

# SPINE & PAIN MANAGEMENT

- Neuromodulation and Interventional treatments for spine, joints, and neuropathies using RFA.
- Conservative management, as outlined by CDC and Prevention federal guidelines, for prescribing narcotics.
- Assist with cancer patient pain management.
- Procedures include:
  - Medial Branch Blocks
  - Epidurals
  - Radiofrequency ablation
  - Kyphoplasty
  - Pain Pumps
  - Spinal Cord Stim Implants
  - Trigger point injections
  - Knee and other joint Injections
  - Botox for migraines and cervical dystonia
  - Viscosupplementation

## Florence

4900 Houston Road  
Florence, KY 41042

## Greendale

1640 Flossie Drive  
Greendale, IN 47025

## Newport/Ft. Thomas

1400 North Grand Avenue  
Newport, KY 41071

(859) 212-7000



**Timothy Burroughs, MD**  
Florence



**Jonathan Grainger, MD**  
Florence, Greendale  
Newport/Ft. Thomas



**Lance Hoffman, MD**  
Florence



**Katie Gruen, APRN**  
Florence



**Carrie Herthel, APRN**  
Florence

# SPORTS MEDICINE

**Personalized non-surgical sports medicine care for children and adults.**

- Comprehensive services across the full range of musculoskeletal injuries.
- One-on-one care plans help patients return to activity as quickly as possible.
- Post-surgical rehabilitation for ligament, cartilage, bone, or muscle injury.

## Florence

10095 Investment Way, Suite 1  
Florence, KY 41042

(859) 301-9070

## Erlanger - Griffin Elite

700 Dolwick Drive  
Erlanger, KY 41018

(859) 212-5600

## Wilder

106 Crossing Drive  
Wilder, KY 41076

(859) 572-2360



**Tyler Browning, MD**  
Sports Medicine  
Family Medicine  
Florence



**James Hahn, MD**  
Sports Medicine  
Pediatrics  
Florence



**Michael Miller, MD**  
Sports Medicine  
Non-Surgical Orthopaedics  
Erlanger - Griffin Elite  
Florence

# THORACIC SURGERY

- Specializing in thoracic and foregut surgery using VATS, laparoscopic, and robotic techniques.
- Our surgeons care for patients with benign and malignant diseases of the chest cavity and esophagus, including GERD and hiatal hernia.

## Edgewood

20 Medical Village Drive, Suite 232  
Edgewood, KY 41017

(859) 301-2465



Royce Calhoun, MD



Valerie Williams, MD



# UROGYNECOLOGY

- Providers have special training in urology, gynecology, and obstetrics.
- Focus on the evaluation and treatment of non-cancerous conditions concerning the female pelvic organs, their supporting muscles and tissues, as well as pelvic reconstructive surgery.

## Edgewood

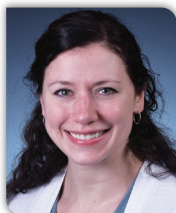
610 Medical Village Drive  
Edgewood, KY 41017

(859) 301-2710

## Newport/Ft. Thomas

1400 North Grand Avenue  
Newport, KY 41071

(859) 757-2132



**Caroline Elmer-Lyon, MD**  
Edgewood  
Newport/Ft. Thomas



**Susan Oakley, MD**  
Edgewood



**Sonali Raman, MD**  
Newport/Ft. Thomas



**Rebecca Heidemann, PA-C**  
Newport/Ft. Thomas



**Kristen Kreinest, APRN**  
Edgewood

# UROLOGY

- Specializing in the diagnosis and treatment of conditions relating to the male and female urinary tract.
- Focus on the evaluation and treatment of conditions relating to the male reproductive organs.

## Florence

7370 Turfway Road, Suite 270  
Florence, KY 41042

(859) 212-0497

## Newport/Ft. Thomas

1400 North Grand Avenue  
Newport, KY 41071

(859) 757-2141



**Noah Allen, MD**  
Newport/Ft. Thomas



**Laura Bertrand, MD**  
Newport/Ft. Thomas



**Sonia Chopra, MD**  
Florence



**Balaji Kalyanaraman, MD**  
Florence



**Lindsay Dillon, PA-C**  
Florence

# VASCULAR SURGERY

- The only comprehensive vascular trained specialist in Northern Kentucky.
- Utilizing the latest surgical techniques, including minimally invasive endovascular procedures.

Edgewood

20 Medical Village Drive, Suite 254  
Edgewood, KY 41017

(859) 344-1600



James Bardgett, MD



Edward Caldwell, DO



Alexander Hou, MD



David Kim, DO



Kevin D. Martin, MD



Samuel Newman, MD



Casey Doty, PA-C



Eric Wood, PA-C





# WEIGHT MANAGEMENT

- **Medical:**

The Medical Weight-Loss Program is a one stop facility that offers a multidisciplinary approach to help patients meet their goals. The program is overseen by a Board Certified Bariatrician coaching patients to have a healthier journey.

- **Bariatric Surgery:**

The Surgical Weight-Loss Program at St. Elizabeth Healthcare offers open, laparoscopic, and robotic weight-loss surgery. A patient may qualify if Body Mass Index (*BMI*) of 40 or above.

## Florence

4900 Houston Road  
Florence, KY 41042

## Ft. Thomas

1400 North Grand Avenue  
Ft. Thomas, KY 41075

## Greendale

1640 Flossie Drive  
Greendale, IN 47025

---

(859) 212-4625



**Vail Brennan, DO**  
Bariatric Surgery  
General Surgery  
Weight Management  
Florence



**Lori Catanzaro, DO**  
Weight Management  
Florence, Ft. Thomas  
Greendale



**M. Ryan Moon, MD**  
Bariatric Surgery  
General Surgery  
Weight Management  
Florence



**Harish Nirujogi, MD**  
Bariatric Surgery  
General Surgery  
Weight Management  
Florence



**Troy Schumann, MD**  
Weight Management  
Florence, Ft. Thomas  
Greendale



**Cathy Goulet, LPCC**  
Weight Management  
Florence



**Veronica Lubbe, LCSW**  
Weight Management  
Florence



**Heather Schuler, APRN**  
Weight Management  
Florence, Ft. Thomas  
Greendale



**Julie Wilson, APRN**  
General Surgery  
Weight Management  
Florence

# WOUND CARE

- **Evaluated and treated by a team of physicians and nurses certified in wound care.**

*\*Specializing in diabetic or neuropathic foot ulcers, pressure ulcers, arterial ulcers, vascular ulcers, and other non-healing chronic wounds.*

- **The Ft. Thomas and Covington centers have received national accreditation by the Undersea & Hyperbaric Medical Society (UHMS), becoming the first to receive the distinction in Kentucky, Ohio, or Indiana. High performance standards are required for accreditation and less than 200 Hyperbaric Oxygen (HBO) centers in the U.S. have achieved accreditation.**
- **Utilize the newest clinical tools in wound healing along with traditional practices to treat specific conditions, including:**
  - Wound dressing and wraps
  - Debridement of necrotic tissue
  - Compression therapy
  - Hyperbaric Oxygen Therapy (HBO)
  - Prescriptive growth factors
  - Bio-engineered skin grafting
  - Edema management
  - Non-invasive vascular assessment

## Covington

1500 James Simpson Jr. Way  
Covington, KY 41011

(859) 655-1100

## Ft. Thomas

85 North Grand Avenue  
Ft. Thomas, KY 41075

(859) 572-3830

## Grant

238 Barnes Road  
Williamstown, KY 41097

(859) 655-1100



**James Bardgett, MD**  
Ft. Thomas



**Eugene Burchell, MD**  
Covington



**Edward Caldwell, DO**  
Ft. Thomas



**John Eldridge, MD**  
Covington



**Matthew Enzweiler, DPM**  
Covington, Ft. Thomas



**Zachary Glenn, DO**  
Ft. Thomas



**Patricia Julien, MD**  
Covington



**Susan Kushman, MD**  
Covington



**Samuel Newman, MD**  
Covington



**Roger Teller, MD**  
Ft. Thomas



**Gregory Worley, DPM**  
Covington, Ft. Thomas



**Allen Zobay, MD**  
Ft. Thomas



**Teresa Tallon, APRN**  
Grant

# URGENT CARE

## Crittenden

405 Violet Road  
Crittenden, KY 41030

(859) 903-0268

## Florence

8726 US Highway 42  
Florence, KY 41042

(859) 647-2900

## Greendale

1640 Flossie Drive  
Greendale, IN 47025

(812) 496-3290

## Highland Heights

2626 Alexandria Pike  
Highland Heights, KY 41076

(859) 757-0434

## Newport/Ft. Thomas

1400 North Grand Avenue  
Newport, KY 41071

(859) 905-3070



**Christina Brockman, DO**  
Greendale



**Mary Gallaway, MD**  
Greendale



**Margie Hall, MD**  
Florence



**Rafid Kakel, MD**  
Florence



**Phillip Kiser, MD**  
Crittenden



**Lidia Lamot-Wasik, MD**  
Florence  
Newport/Ft. Thomas



**Lily Ning, MD**  
Crittenden



**Raymond Pate, DO**  
Florence  
Newport/Ft. Thomas



**Oscar Perez, DO**  
Crittenden



**M Neville Pohl, MD**  
Florence  
Newport/Ft. Thomas



**Angel  
Velazquez-Santiago, MD**  
Crittenden



**Ryan Woods, MD**  
Florence  
Newport/Ft. Thomas



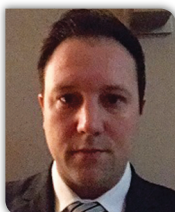
**Alyssa Brossart, APRN**  
Greendale



**Rani Clark, APRN**  
Newport/Ft. Thomas



**Rosa Hill, APRN**  
Florence  
Newport/Ft. Thomas



**Matthew Karas, APRN, JD**  
Florence



**Kathryn Keathley, APRN**  
Newport/Ft. Thomas



**Suzanne Kreger, APRN**  
Greendale



**Jessica Metzger, PA-C**  
Greendale



**Amy Reusch, APRN**  
Florence



**Amy Richardson, APRN**  
Highland Heights



**Jonathan Varney, APRN**  
Crittenden

[illegible]







Printed March 2020